

FIRE EVACUATION PLAN – 1st Floor

Emergency Instructions

Use the nearest **EXIT / SORTIE** indicated on this plan.

Remain calm and follow posted directions.

Assist visitors if safe to do so; report anyone needing help.

Proceed to the **Meeting Area** in the car lot by the main vehicle entrance.

Emergency Contact: Kapuskasing Fire Department – 705-335-4225

Legend

● All fire extinguishers are identified by a red dot.

D1 – Receiving Area Door (Staff Only)

D2 – Showroom Back Door

D3 – Jeep Showroom Door

D4 – Main Entrance Door

D5 – Service Area Door (Staff Only)

D6 – Parts Area Back Door (Staff Only)

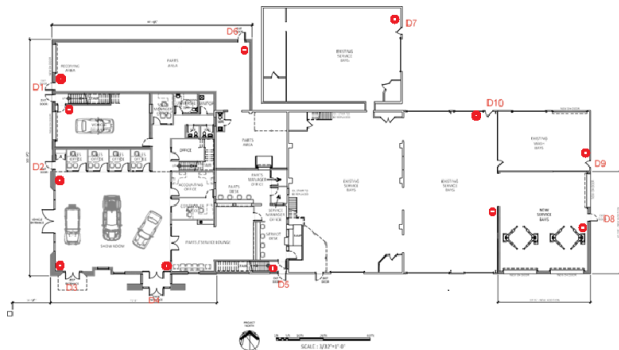
D7 – Old Service Bays Door (Staff Only)

D8 – New Service Bays Door (Staff Only)

D9 – Wash Bay Door (Staff Only)

D10 – Middle Service Bays Door (Staff Only)

Meeting Area – Car lot near main vehicle entrance



FIRE EVACUATION PLAN – 2nd Floor

Emergency Instructions

- Use the nearest EXIT / SORTIE indicated on this plan.
- Remain calm and follow posted directions.
- Assist visitors if safe to do so; report anyone needing help.
- Proceed to the Meeting Area in the car lot by the main vehicle entrance.
- Emergency: Kapuskasing Fire Department 705-335-4225

Legend

- All fire extinguishers are identified by a red dot.
- ST1 – Stair exit to Parts Receiving area
- ST2 – Stair to Showroom
- ST3 – Stair to Service area
- Use nearest exit as indicated on the 1st floor plan

